

MAGICAL MUSEUMS

ACTIVITY BOOK

Explore some of the amazing objects
and artworks at Hull Museums and
Ferens Art Gallery with this booklet
packed with fun activities!

Brought to you by:



Working in partnership



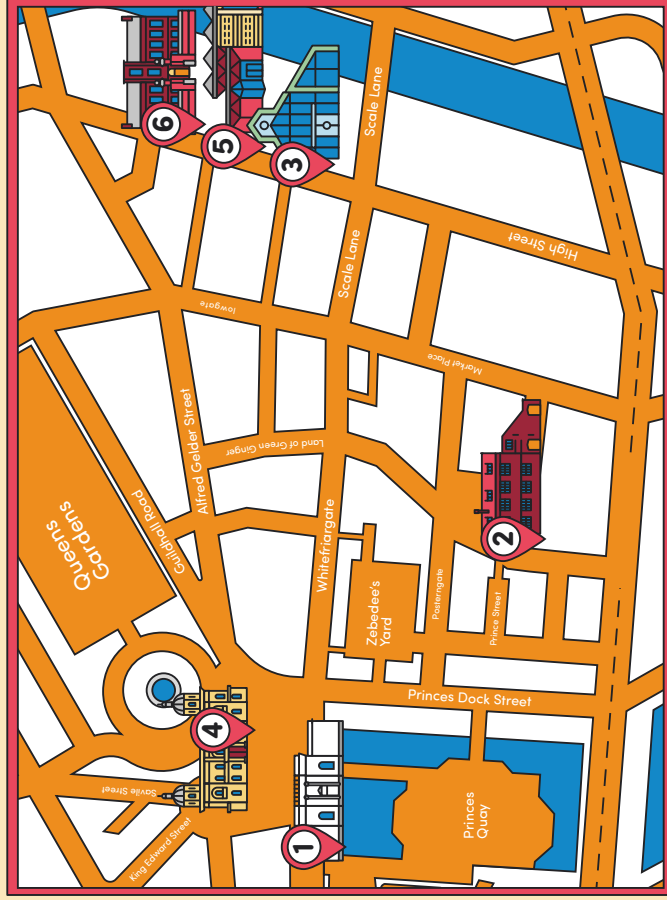
Supported using public funding by
**ARTS COUNCIL
ENGLAND**

Welcome

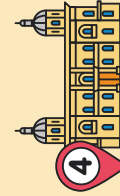
Hull Museums and Ferens Art Gallery are full of amazing objects and artworks dating from Pre-history to the present day. In this booklet we introduce you to some of the amazing treasures of our collections and fun activities you can do inspired by them to help you delve into the magic of the museums!

How to find us:

Hull Museums and Ferens Art Gallery consist of 6 different sites across the city of Hull. Here's where to find our wonderful sites.



Ferens Art Gallery
Queen Victoria Square
Carr Lane
HU1 3RA



Maritime Museum
Queen Victoria Square
Carr Lane
HU1 3DX



Hands on History Museum
South Church Side
HU1 1RR



Streetlife Museum
High Street
Hull
HU1 1PS



Hull and East Riding Museum
36 High Street
Hull
HU1 1NQ



Wilberforce House
High Street
Hull
HU1 1NQ

Draw and Explore

This page is a space for you to flip back to and make notes and sketches of the objects and facts you discover.

STREETLIFE MUSEUM

Activities to do during your visit!

At Streetlife Museum, you can explore an amazing selection of vehicles, from carriages, railways and cars to buses and trams, as you discover the different kinds of transport people have used over the past 200 years!

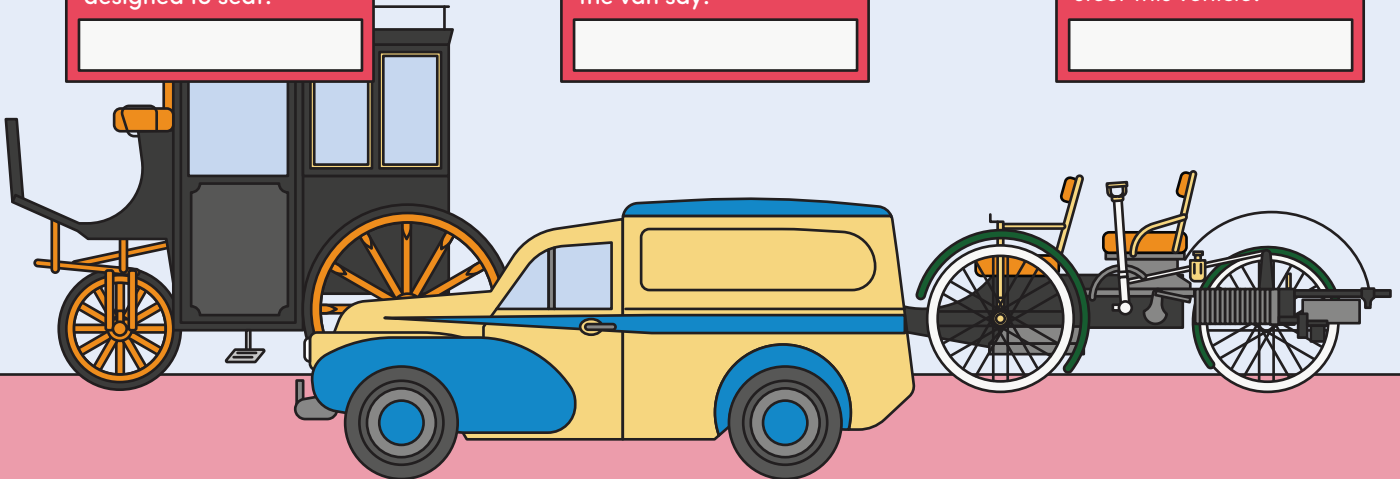
Museum Trail

Why not come and visit the Streetlife Museum and have a go at this fun trail?

Find the Three-wheeled
Hansom Cab.
How many people was it
designed to seat?

Find the Morris Minor
Van. What does the
writing on the side of
the van say?

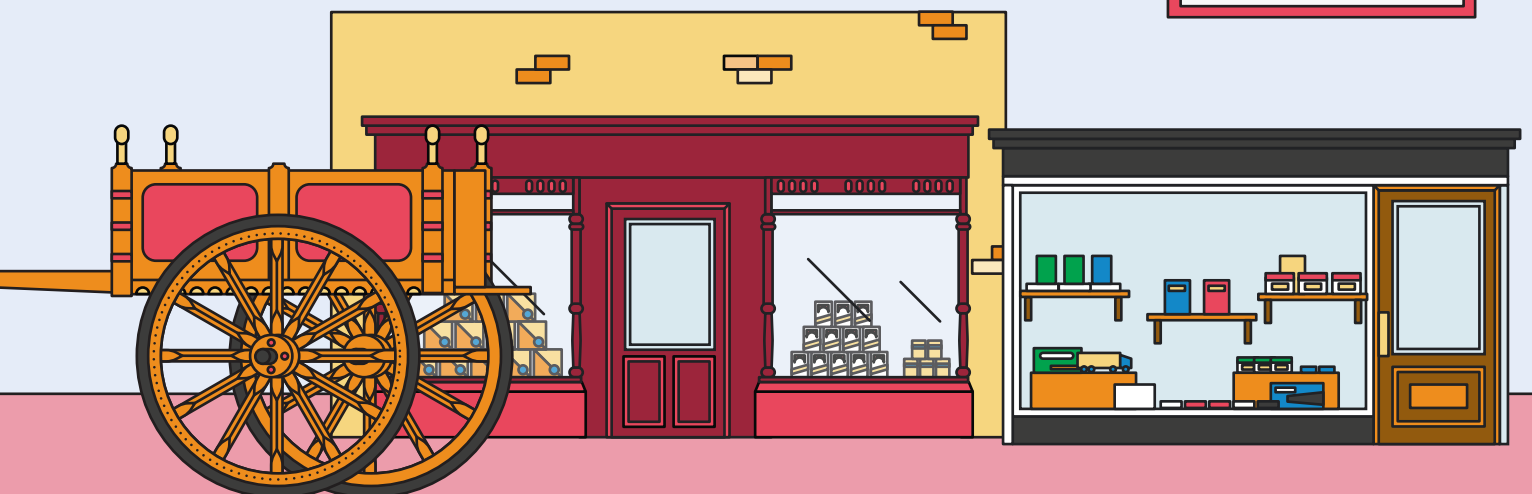
Find the Coventry
Motette tandem motor
tricycle. How did you
steer this vehicle?



Find the Sicilian Caretta.
What was it used for?

Find the Co-operative on
the High Street. What
breakfast food can you see
for sale in the window?

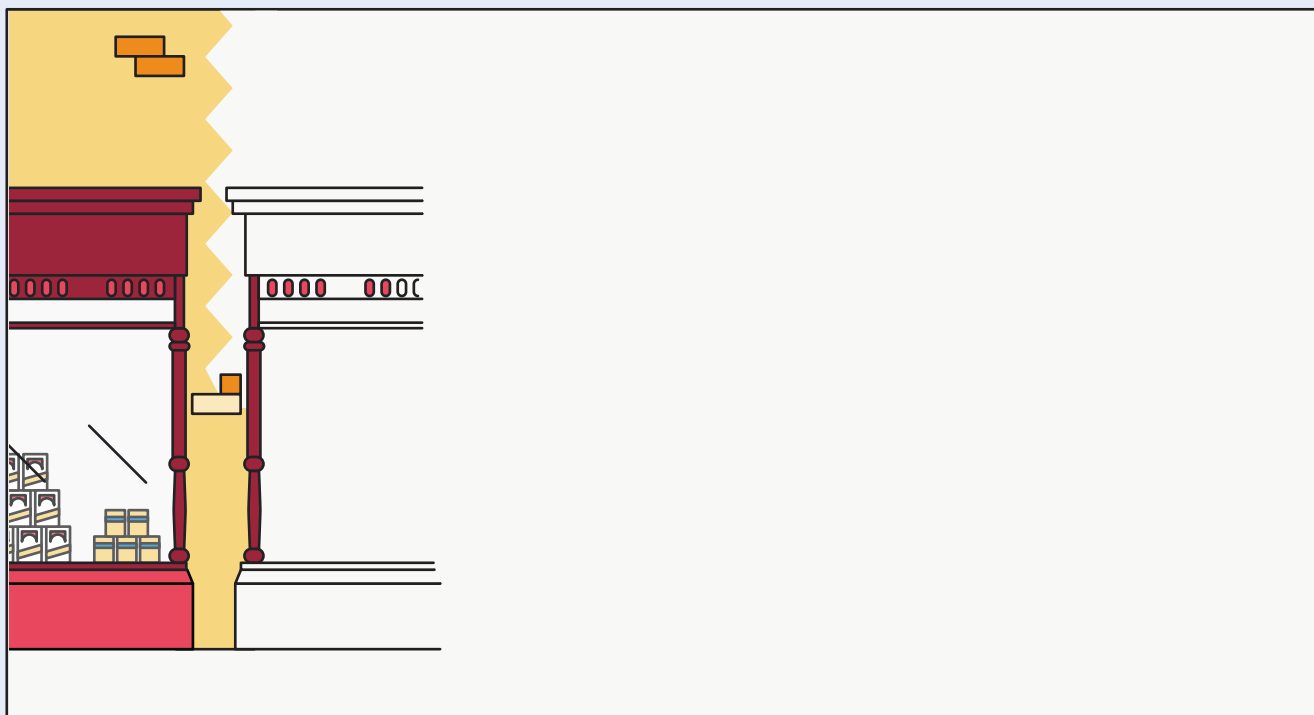
Find the toy shop.
Name 2 toys you can
see in the shop
window.



Create your own Street Scene

Complete the drawing of the street scene at the museum below by drawing on the details on the different shops and vehicles that you can see. What other details could you add?

Why not add some colour to your drawing when you get home?



Fun and Games for Little Ones

These websites are full of great simple ideas to help young children get active, play and explore.

Active Imaginations:

For lots of fun, simple games to try inside and outside in groups of different sizes.

www.activeimagination.co.uk

Henry:

Fun activities to help babies and young children explore the world around them.

www.henry.org.uk/activities



A Healthy Start to the Day!

Having a healthy breakfast is an important way to start the day. Change 4 Life has lots of great ideas and recipes for easy and yummy breakfasts for busy families. Visit:

www.nhs.uk/change4life/recipes/breakfast

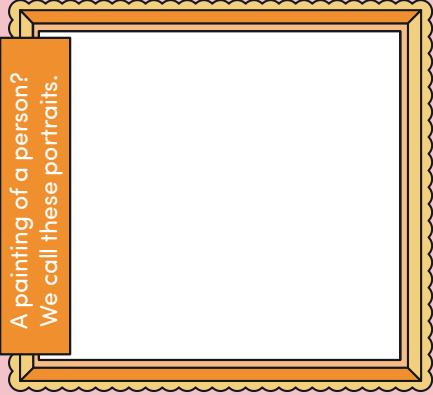


MAGICAL MUSEUMS

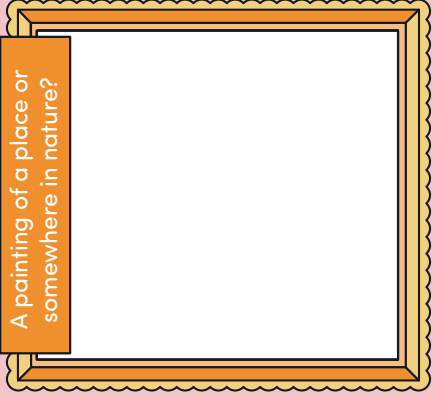
FERENS ART GALLERY

As you go around the gallery, can you find and draw your own version of...

A painting of a person?
We call these portraits.



A painting of a place or
somewhere in nature?



Spotter Guide

As you go around the gallery, can you spot:



An artwork with an
animal in it

☐


An artwork which
shows a river or sea

☐


A sculpture

☐


An artwork which has
flowers or plants in it.

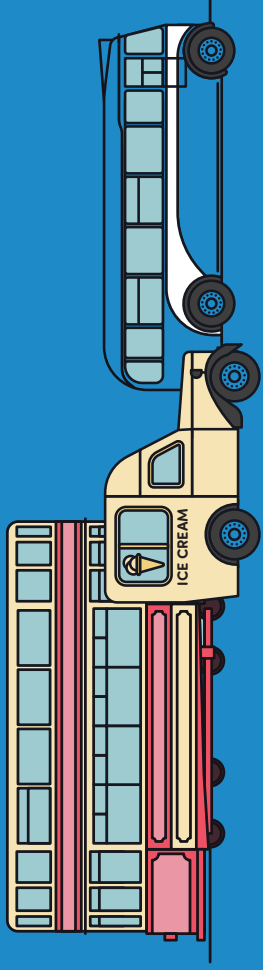
☐

Explore some of our wonderful museums and
their amazing collections with this fun trail.

Please note, it is essential to book a separate time slot to visit each of our museums. Booking is
not required to visit the Museums Quarter Garden. To find links to our online booking pages,
please visit: www.hcandl.co.uk/museums-and-galleries

STREETLIFE MUSEUM

Can you find these vehicles as you go around the museum?



Hull Double Decker Tram

What is the number
of this tram?

Ice Cream Van

What is the name of the
company this van
belonged to?

AEC Regal Mark III

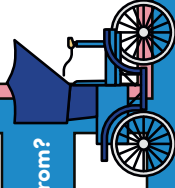
Where is this bus going to?

Explore the street scene

What foods can you see for
sale in the Co-op?

Find the pharmacy.
What is the number
of the shop?

Find the signal box. Where is it from?



Find our collection of
early motor cars.

Draw your favourite car here:

STREETLIFE MUSEUM

Transport Word Search

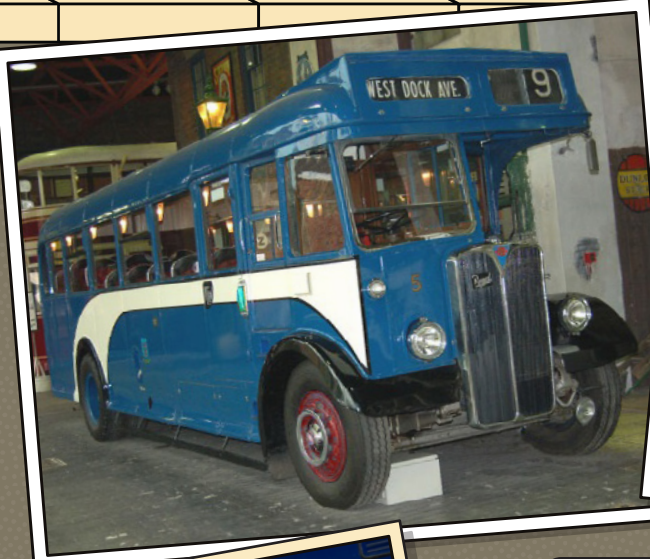
These are some of the vehicles you can see at the Streetlife Museum. Can you find them all in the grid below? They are hidden forwards, backwards, up, down and diagonally

- | | | |
|-------------------------------------|--------------------------------|-----------------------------------|
| <input type="checkbox"/> Bubble car | <input type="checkbox"/> Cart | <input type="checkbox"/> Carriage |
| <input type="checkbox"/> Sleigh | <input type="checkbox"/> Tram | <input type="checkbox"/> Bicycle |
| <input type="checkbox"/> Bus | <input type="checkbox"/> Plane | <input type="checkbox"/> Tricycle |

C	B	T	T	J	P	V	H	I	S
A	U	Z	R	B	J	R	D	L	T
R	B	N	Y	A	H	I	E	Q	B
R	B	K	N	N	C	I	W	I	C
I	L	G	N	Y	G	W	C	L	Z
A	E	Y	Z	H	E	Y	T	F	M
G	C	F	H	N	C	A	R	T	A
E	A	G	A	L	A	S	U	B	R
X	R	L	E	O	J	V	F	O	T
Z	P	E	L	C	Y	C	I	R	T

Spot the Difference

Can you spot the 5 differences between these 2 images of this bus from the Streetlife Museum?



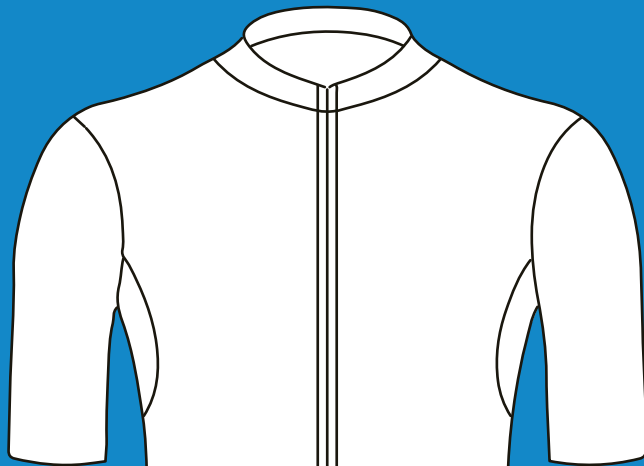
Invacar from the 1970s – Invacars were a type of vehicle designed for disabled drivers. They had 3 wheels and could only seat the person driving the car.

Raleigh Children's Tricycle, 1952.



Design your own Cycling Jersey

This cycling jersey is on display at the Streetlife Museum. Some people still wear special clothing for cycling today. In the outline to the right, have a go at designing your own cycling top and colour it in!



Cycling in Hull Today

There are lots of great opportunities for cycling in Hull today including the Ennerdale Cycle Circuit, an all-weather 1km circuit designed for cyclists of all levels from beginner to elite. You can find out and book online at

www.hcandl.co.uk/sport-and-leisure-and-parks/your-local-leisure-centre-and-sports-sites/ennerdale-cycle-circuit

For tips on getting kids started with cycling, visit www.britishcycling.org.uk or

www.nhs.uk/change4life/activities/sports-and-activities/cycling

To discover fantastic cycling routes across the UK and fun activities and games, visit www.sustrans.org.uk



MUSEUM HIGHLIGHTS

Raleigh Tricycle, 1952

This object is a children's tricycle from the 1950s. It was made by the British bicycle company Raleigh.

'Boneshaker' Bicycle, 1860

This old bicycle is called a 'Boneshaker'. This is because it has wheels made from wood and iron which made the handlebars shake when you rode it! Boneshakers were one of the first bicycles to have pedals.



STREETLIFE MUSEUM

At Streetlife Museum, you can explore an amazing selection of vehicles, from carriages, railways and cars to buses and trams, as you discover the different kinds of transport people have used over the past 200 years!



COLLECTION HIGHLIGHTS

Sculpture of pilot Amy Johnson.

Amy Johnson

In one of the shop fronts at the Streetlife Museum, we have a small display about pilot Amy Johnson. Amy is a fascinating part of Hull's history. She was born in Hull in 1903 and had an amazing career, including becoming the first woman to fly on their own from England to Australia in 1930.

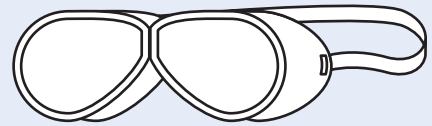
Design a Flight Outfit for Amy

Imagine you were helping Amy get ready for her flight to Australia. In the outline to the right, have a go at designing and colouring in a flight outfit for her.



COLLECTION HIGHLIGHTS

Photo postcards of Amy Johnson from the wider museum collections.



STREETLIFE MUSEUM

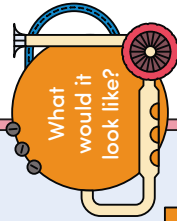
All aboard!

At Streetlife Museum you can experience over 200 years of transport history. Enjoy the sights, sounds and smells of the past as you explore old shops and streets. Carriages, railways, cars, buses, trams and bicycles all tell the story of how we used to get about. And don't forget to hop on the carriage and car rides for the full experience. It's all here!

Vehicle Of The Future

If you could design your dream vehicle what would it be?

Have a go at drawing your dream vehicle, then colour it in and add labels explaining what it is and what it does.



Can you make it environmentally friendly?

What would it be made of and be powered by?

MUSEUM HIGHLIGHTS

Lanchester Open Tourer Car, 1907-1908

This old car was made in Birmingham in 1907-08 and doesn't have a steering wheel! Instead of a wheel it has what is called a tiller, like you would have on a small boat. You push the lever from side to side and hope for the best.



Balloon Car Challenge

You'll need

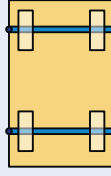
- Small, rectangular piece of cardboard
- 3 x drinking straws
- 2 x wooden skewers
- Scissors
- Sticky tape
- 4 x plastic bottle tops

Don't have all the materials? Don't worry. If you have a small push along toy car or construction set you can build a car with, try and make it self-powered by attaching a balloon and straw with tape and blowing into the straw to make the car move.

Have a go at making your own balloon powered car in this fun activity!

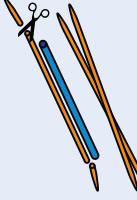
STEP 1

Take your piece of card and tape 2 of your straws to it width ways, 2-3cm from the end. Trim them to size so they don't hang over the edge.



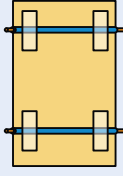
STEP 2

Ask an adult to trim the wooden skewers for you so they are around 2cm longer than the pieces of straw.



STEP 3

Push the wooden skewers through the straws.



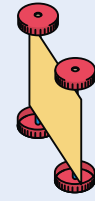
STEP 4

Ask an adult to help you make a hole in the centre of each of your 4 bottle tops.



STEP 5

Attach the bottle tops to the ends of your skewers to make the wheels of your car.



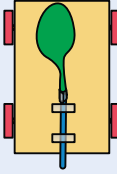
STEP 6

Push a straw into the end of a balloon and tape it in place tightly.



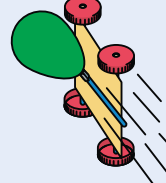
STEP 7

Tape the balloon and straw to the top of the car making sure the end of the straw not directly attached to the balloon hangs over the edge of the car slightly.



STEP 8

Place the car on a smooth surface, blow through the end of the straw to blow the balloon up, let go and watch your car move!



MUSEUM HIGHLIGHTS:

Gardner Serpallet steam car, 1901

This is a steam powered car from 1901. In the early days of cars people experimented with steam, petrol and even electric cars before settling for petrol.



MUSEUM HIGHLIGHTS:

Two-Wheeled Dandy Horse, 1815-1820

This strange contraption was called a Dandy Horse. It was a pedal-less bicycle which would have been used by gentlemen for taking exercise in the early 1800s.



STREETLIFE MUSEUM

At Streetlife Museum, you can explore an amazing selection of vehicles, from carriages, railways, and cars to buses and trams, as you discover the different kinds of transport people have used over the past 200 years!

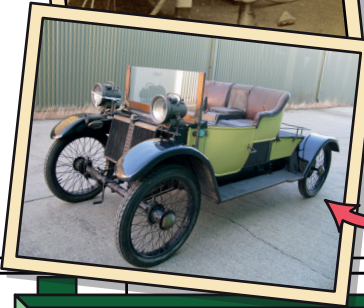
Transport Colouring

Have a go at colouring in this drawing of some of the vehicles you can see at the Streetlife Museum.

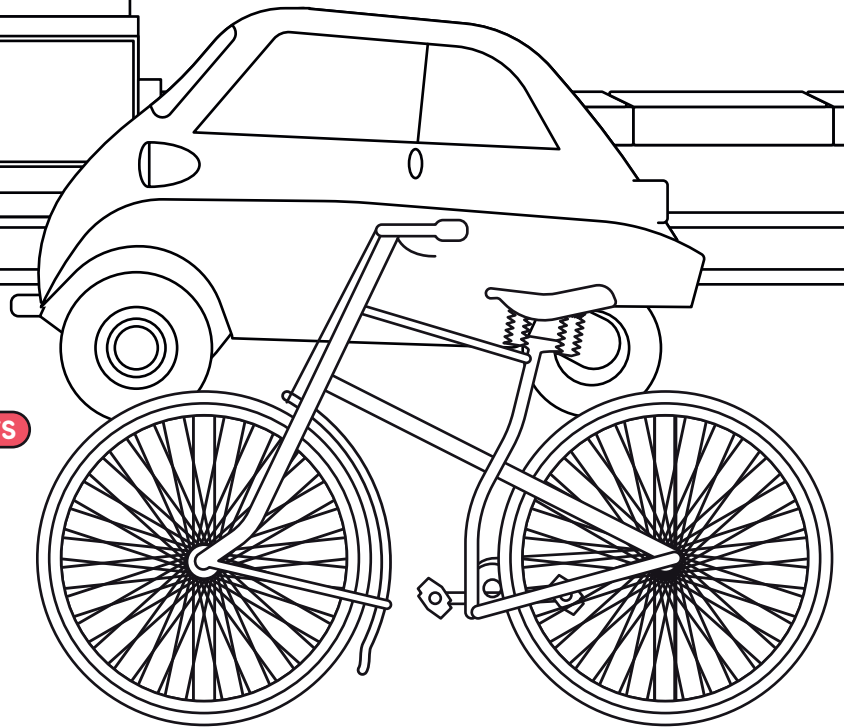


COLLECTION HIGHLIGHTS

Photograph of a man standing next to a penny farthing, a kind of old-fashioned bicycle.



Lanchester Open Tourer, a car from the early 1900s.



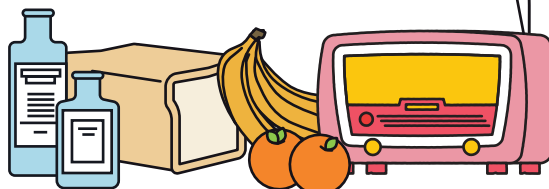
R	Y	T	L	S	N	T	F	T	M	M
C	A	W	I	K	C	O	D	O	E	D
D	O	D	X	U	O	Y	S	O	D	S
F	Q	R	I	T	R	S	W	T	I	E
K	D	H	N	O	Q	F	L	H	C	L
Q	R	M	O	F	B	X	K	P	I	C
P	L	U	P	R	L	C	I	A	N	Y
S	T	E	E	W	S	A	L	S	E	C
O	K	A	F	E	O	F	K	T	D	I
J	D	Z	L	L	H	B	S	E	H	B
V	E	G	E	T	A	B	L	E	S	L

Word search

At the Streetlife Museum we have a big street with pretend shops that have been made to look like shops would have looked around 80 years ago. There is a toy shop, a bicycle shop, a Co-op food shop and more! We've put a list here of some of the different things you can see in the shops. Can you find them all and tick them off the shopping list?

SHOPPING LIST

- ☐ SWEETS
- ☐ BICYCLES
- ☐ FRUIT
- ☐ TOOTHPASTE
- ☐ CORN FLAKES
- ☐ TOYS
- ☐ BREAD
- ☐ MEDICINE
- ☐ RADIO
- ☐ VEGETABLES



Streetlife Museum

Spot the difference

The photo below is of one of the many amazing cars you can see at the Streetlife Museum. It is called the Gardner-Serpollet Car and it was powered by steam! It was made nearly 125 years ago.

Can you spot 5 differences between the two photos of the car below?



Dot to dot

The picture here is of a wheelbarrow shaped like a rhinoceros. You can see it in the Streetlife Museum. It was used to celebrate the opening of a railway line between Hull and Hornsea.

Can you join up the dots in number order to make a picture of a rhino?



COLLECTION HIGHLIGHTS

Rhinoceros
wheelbarrow

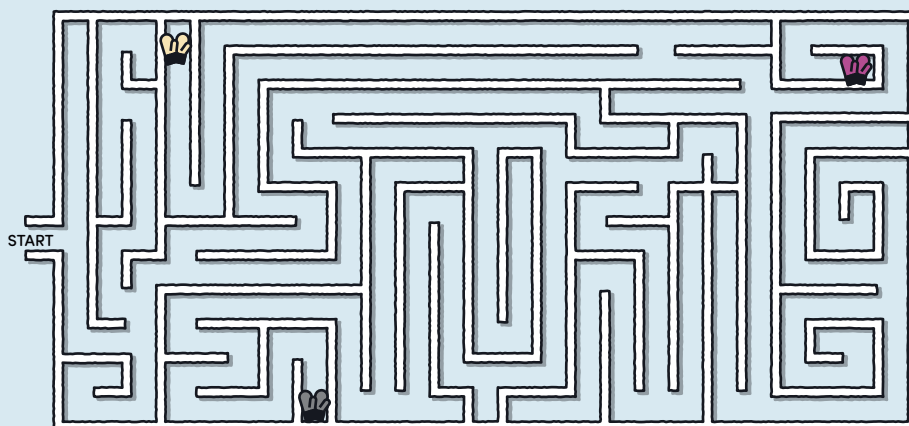


WINTER PUZZLES

Have a go at these fun puzzles and activities inspired by the Hull Museum collections.

Mitten Maze

Can you find each of the different pairs of mittens from the museum collections in the maze?



Knitted woollen mittens from the Hull Maritime Museum collections, from around 1940.



Late-medieval leather mitten from the Hull and East Riding Museum.



Purple woollen mittens from the Hands on History Museum collections.

Spot the Difference Sleigh

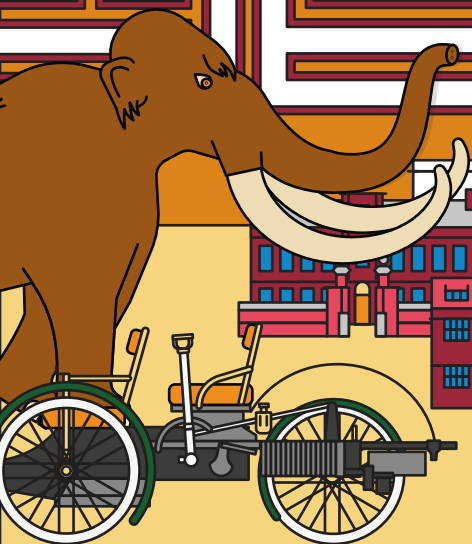
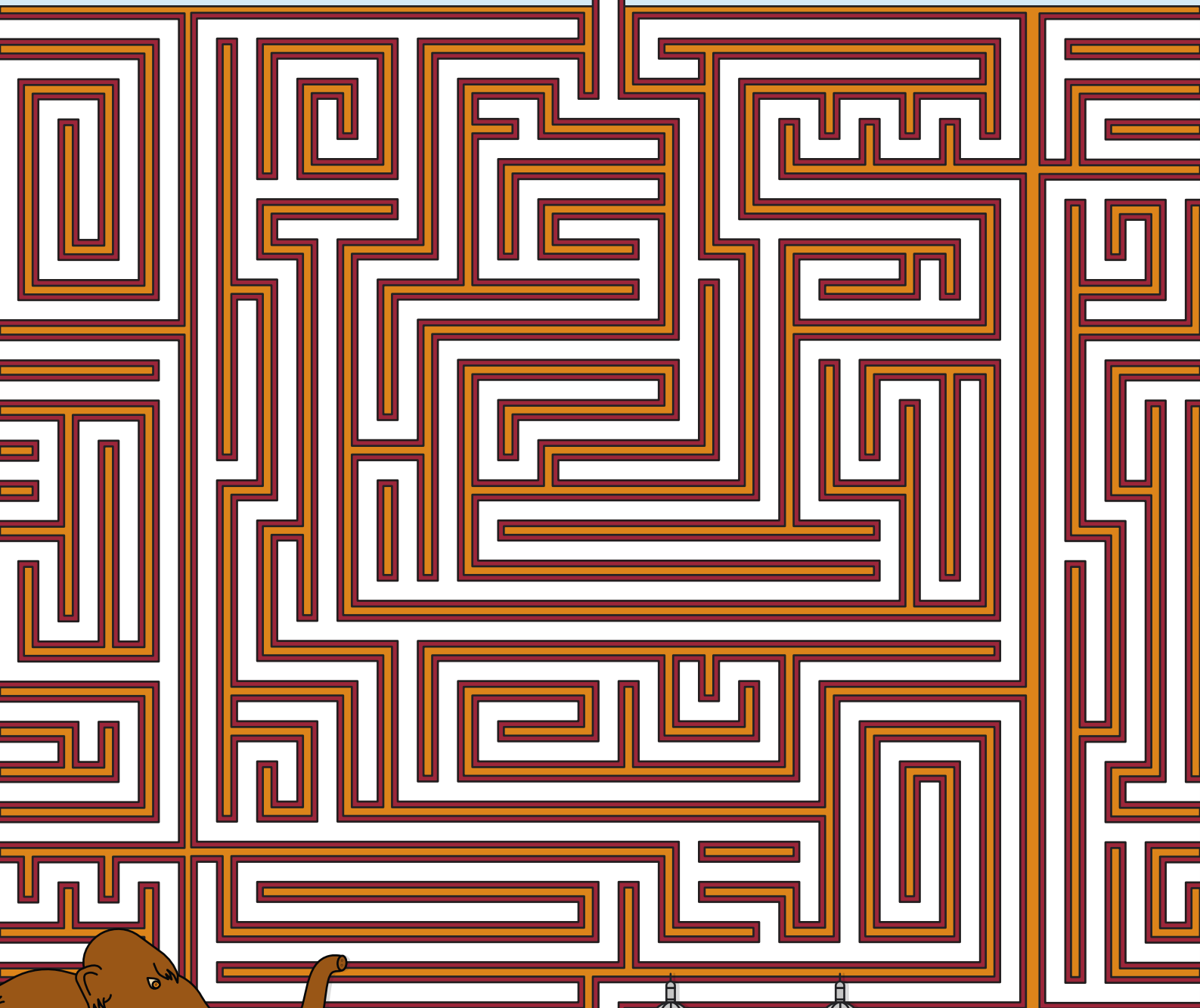
Can you spot 5 differences between these two photos of Lady Chesterfield's sleigh which is on display at the Streetlife Museum?



Museums Maze Puzzle

Can you work your way through the maze to find our museums?

START

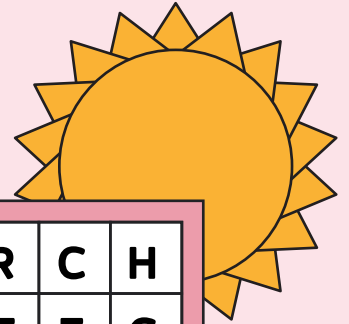


FINISH



Wordsearch

Can you find all of these words to do with spring in the grid below?
They are hidden forwards, backwards, up, down and diagonally.



Q	Z	S	D	B	B	M	U	V	I	A	I	R	C	H
O	Q	N	A	E	M	L	A	T	U	Y	E	T	E	C
C	D	Y	F	P	S	A	O	K	I	T	U	R	H	J
Q	R	F	F	Y	U	P	L	S	S	B	E	E	T	Z
Q	I	O	O	X	N	X	J	A	S	O	B	S	Y	D
D	B	U	D	S	S	D	E	Y	X	O	E	A	W	K
Y	U	E	I	C	H	I	C	K	O	N	M	W	R	F
F	P	C	L	P	I	T	A	D	P	O	L	E	L	X
G	M	K	K	K	N	Q	G	H	W	Y	X	O	K	L
B	S	F	W	L	E	X	G	G	E	S	W	D	M	A
S	D	S	V	R	I	B	H	Y	X	E	J	N	G	R
S	U	L	E	G	P	N	G	P	R	N	I	A	I	M
K	B	N	W	A	P	S	G	O	R	F	D	C	S	C
P	O	K	F	H	U	V	T	U	Q	I	K	I	V	C
K	N	E	Q	M	L	U	O	U	X	O	M	H	V	G



Egg
Rabbit
Bird
Easter
Tadpole

Duckling
Daffodil
Flower
Frogspawn
Lamb

Buds
Nest
Chick
Blossom
Sunshine

Summer Colouring Fun

Have a go at colouring in this Hull Museums summertime drawing



Brought to you by:



Working in partnership



Supported using public funding by
**ARTS COUNCIL
ENGLAND**

KEEP IN TOUCH



@hull_museums

@hullferens



Hull Museums



@hull_museums

@ferensartgallery