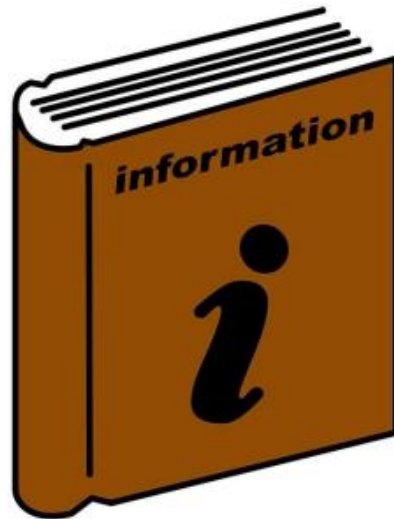


# Easy Read Guide



This is an Easy Read Guide to visiting **Ferens Art Gallery**

Ferens Art Gallery has displays of



Sculptures, paintings and photographs.



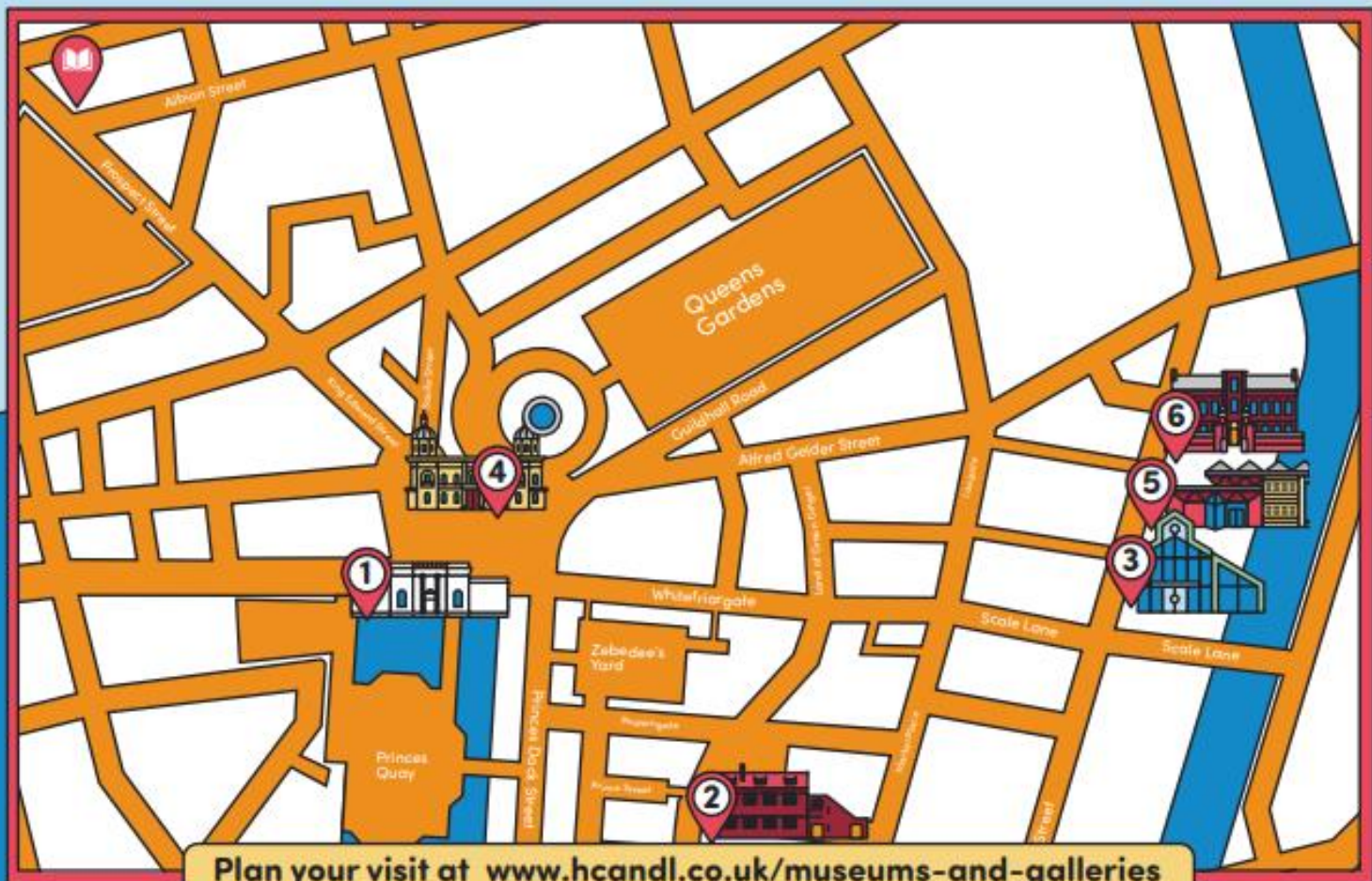
This is the address of the gallery;



Ferens Art Gallery  
Queen Victoria Square  
Hull  
HU1 3RA

 WHAT3WORDS

The What 3 words location for  
Ferens Art Gallery is  
[///stem.taken.gown](https://www.what3words.com/stem.taken.gown)



Plan your visit at [www.hcandl.co.uk/museums-and-galleries](http://www.hcandl.co.uk/museums-and-galleries)



**1**  
**Ferens Art Gallery**  
 Queen Victoria Square  
 Carr Lane  
 HU1 3RA



**2**  
**Hands on History Museum\***  
 South Church Side  
 HU1 1RR



**3**  
**Hull and East Riding Museum**  
 36 High Street  
 Hull  
 HU1 1NQ



**Hull Central Library**  
 Albion Street  
 Hull  
 HU1 3TF



**4**  
**Maritime Museum**  
 Queen Victoria Square  
 Carr Lane  
 HU1 3DX  
 Currently closed for redevelopment



**5**  
**Streetlife Museum**  
 High Street  
 Hull  
 HU1 1PS



**6**  
**Wilberforce House**  
 High Street  
 Hull  
 HU1 1NQ

\*Please note - Hands on History Museum is open 12noon - 4pm on the second and fourth Saturdays of each month.



## Driving to the gallery



There is Blue Badge parking at City Hall (Paragon Street).



The nearest multi-story carpark is Princes Quay.

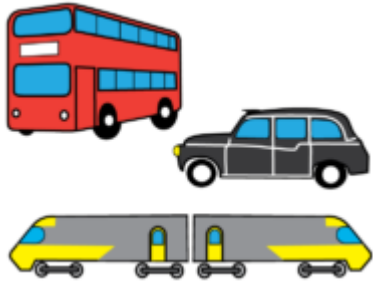
A multi-story carpark has lots of levels you can park on.



Princes Quay is a 1 minute walk from Ferens Art Gallery.



**1 min**



## Coming to us on public transport



The nearest bus stop is on Monument Bridge.

Bus numbers 121, 60A, 66, PRX, X46 and X55 stop here.



**1 min**

Monument Bridge is 1 minute walk away from the gallery.



There is another bus stop nearby on Carr Lane.

Bus numbers 51 and 57 stop here.



**1 min** The Carr Lane bus stops are a 1 minute walk from the gallery.



Hull Paragon Railway Station is a 7 minute walk from the gallery.



You can book a wheelchair accessible taxi by calling Wheelchair Taxi Transport Hull on 01482 473235.

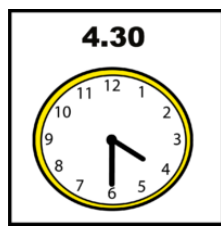
## Our Gallery



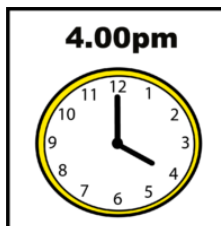
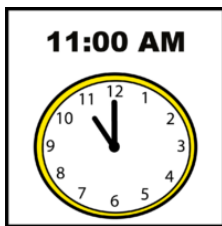


It is free to visit the gallery.

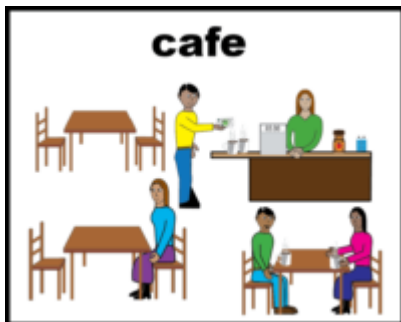
### Opening Times



The Museum is open 10am-4.30pm on Mondays – Saturdays



The Museum is open 11am – 4pm on a Sunday.



There is a café at the gallery.



We have a shop.





There is a ramp on the left-hand side of the entrance to the gallery



There is level access to Galleries 1-9 and Explore Art (Under 5s gallery).



Level access means it is flat and you don't need to go up steps or a lift to get around.



There is a lift and steps to the first floor for Galleries 11 and 12.

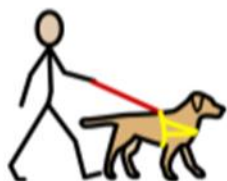


An Audio Descriptive Highlights Tour is available through a handset borrowed from the front desk or from

[Ferens Art Gallery audio- descriptive guide – VocalEyes](#)







Assistance dogs are welcome



There are Induction Loops at the front desk, the café, counter and the shop counter.

Induction loops are machines that can help people with hearing aids hear more clearly.



BSL interpretation is available for talks and tours

## Toilets



There are 2 sets of toilets at the gallery. Both sets have an accessible toilet.



1 is near the Studio.



This also has a baby change table and nappy bin.



The other set of toilets are near the café. These are unisex toilets.

This means they are not separated into mens and womens toilets. Everyone can use them.



There is a baby changing table and nappy bin in here.

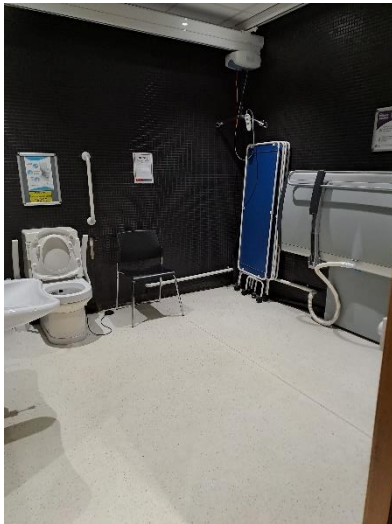


This accessible toilet is in the café toilets.

## Changing Places Toilets



Changing Places toilets are larger accessible toilets for people who cannot use standard accessible toilets.



They have equipment like hoists, curtains, adult sized changing bed and space for carers.



Our nearest Changing Places Toilets is at the Wilson Centre.



**3 min**

This is a 3 minute walk away.



There is another one at the Guildhall.



**7 min** The Guildhall is 7 minutes walk away.

## Relaxed Crafts and Quiet Openings



We sometimes have relaxed craft sessions. These are disability-friendly sessions for people who would find busy sessions stressful.



We sometimes have Quiet openings. They are at times when the museum is less busy.



This is where we turn off sounds in the museum. This can help people who find it stressful when it is noisy.

## More Information



Gallery 1 is a bit darker.



Most of the inside doors can be heavy to open.

### Ferens Art Gallery – Visual Story



Ferens Art Gallery has paintings, photographs and sculptures from medieval times to the modern day.

The gallery is usually quite quiet from 10am – 11am (unless there is a school in) and from 2pm – 4.30pm. We open at 11am on a Sunday. This is usually a quieter day unless there is an event going on.



It is free to visit the gallery.



If you are organising a visit with a large group (of 15 or more people) you will need to book by calling 01482 318733 or emailing [heritage.learning@hcadl.co.uk](mailto:heritage.learning@hcadl.co.uk).

We have a Visual Story at the front desk and on our website [Ferens Art Gallery | Hull Culture and Leisure \(hcadl.co.uk\)](https://www.hcadl.co.uk)

